

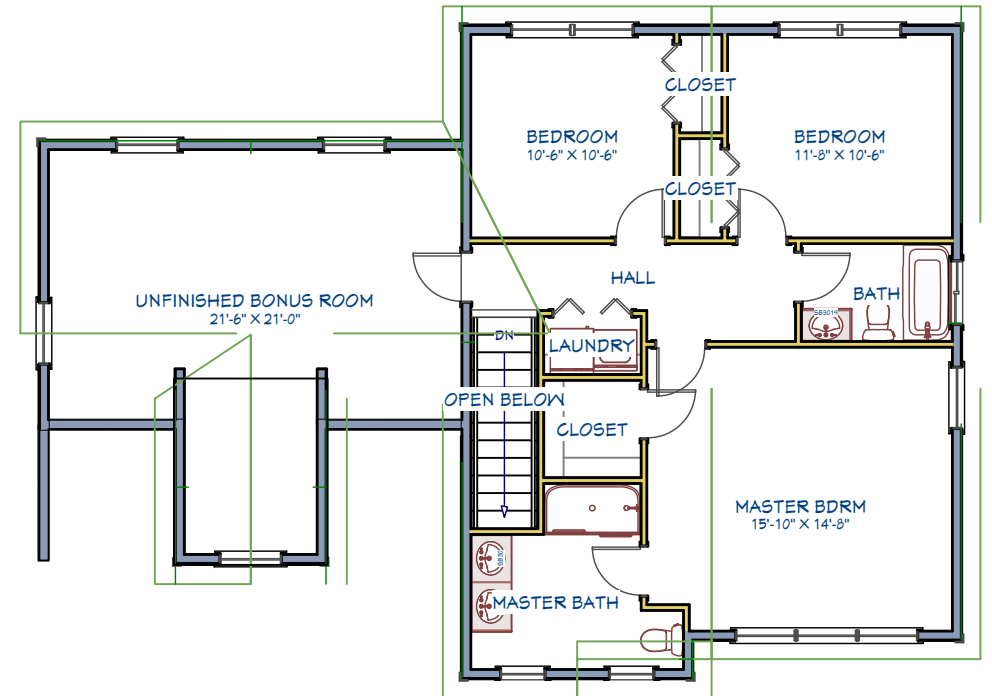
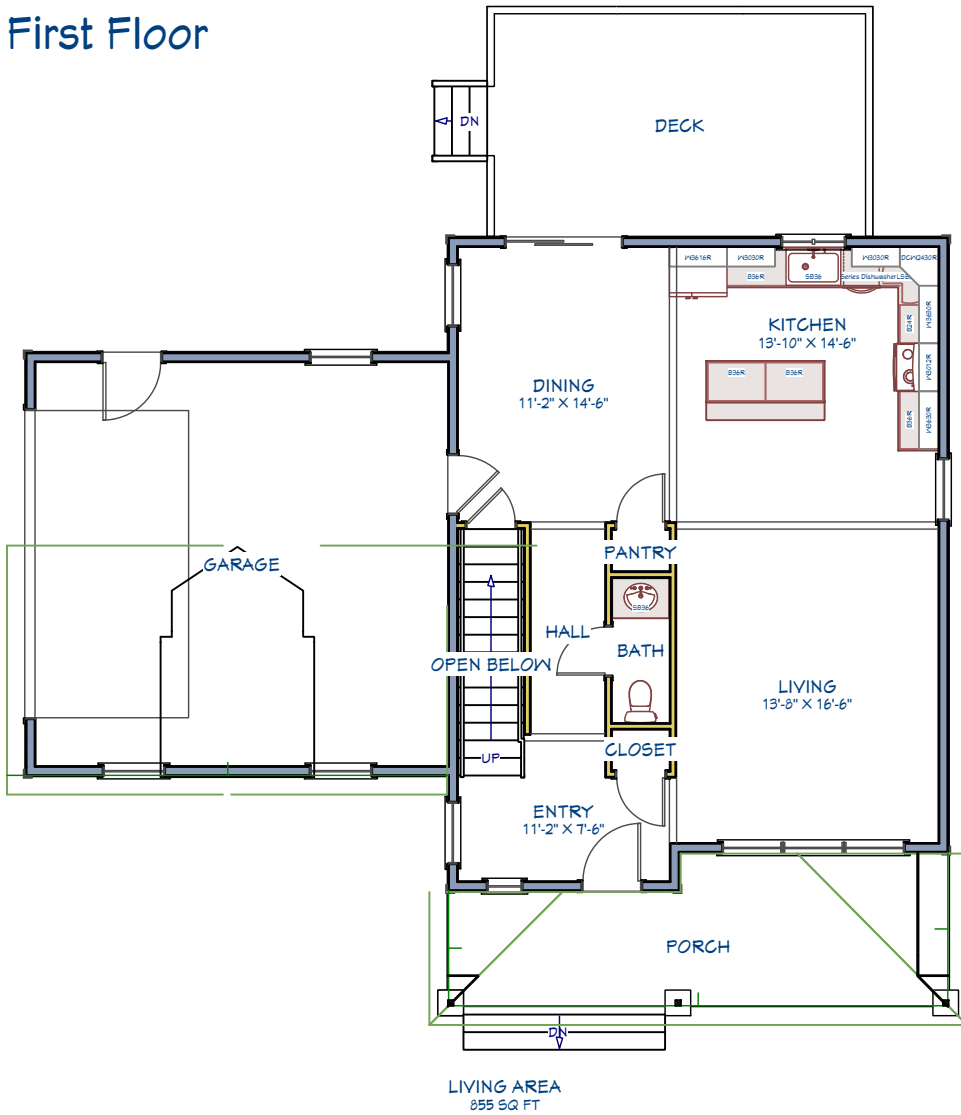
Picture shown is a facsimile. May include upgrade items.



The Poplar

1712 Sq. Ft., 3 bedrooms, 2 and a half bathrooms, 385 Sq. Ft. Bonus Room

First Floor



Second Floor



FRONT VIEW



LEFT SIDE VIEW

BACK VIEW

RIGHT SIDE VIEW

